



Name	POLEN
Port of Registry	Nassau, Bahamas
Flag	Bahama
Vessel Type	Twin Screw Tug
Year of Build	1986
Class	Bureau Veritas
Bollard Pull	30 Tbp
Owner	EMAR Offshore Services b.v., as Managers of Black Star Shipping

MAIN DIMENSIONS

Length overall	28,60 m
Beam overall	8,74 m
Depth at sides	4,20 m
Draught aft	3,78 m
Displacement	614 T
Gross tonnage	236 T

PROPULSION SYSTEM

Main Engine	2 x SWD, type 6FH240
Total Power	1780 bkW (2400 Hp)

DECK EQUIPMENT

Tow Winch Aft	Single Drum, 100T
Tow Wires Aft	1 x 700m, Ø44mm
Towing Hook Aft	Yes

NAUTICAL AND COMMUNICATION EQUIPMENT

Magnetic compass	Alphacourse
Radar	Furuno FAR 2117
GPS	Furuno GP-150
AIS	Furuno FA-150
VHF Radio telephone	2x Sailor DSC RT5022 / 2x VHF 6210

AUXILIARY EQUIPMENT

Main Generator Sets	2 x Caterpillar C4.4
Fuel oil separator	3 m ³ /hr

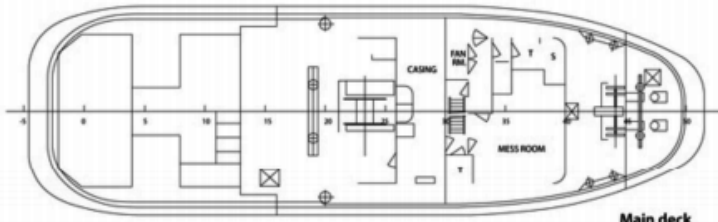
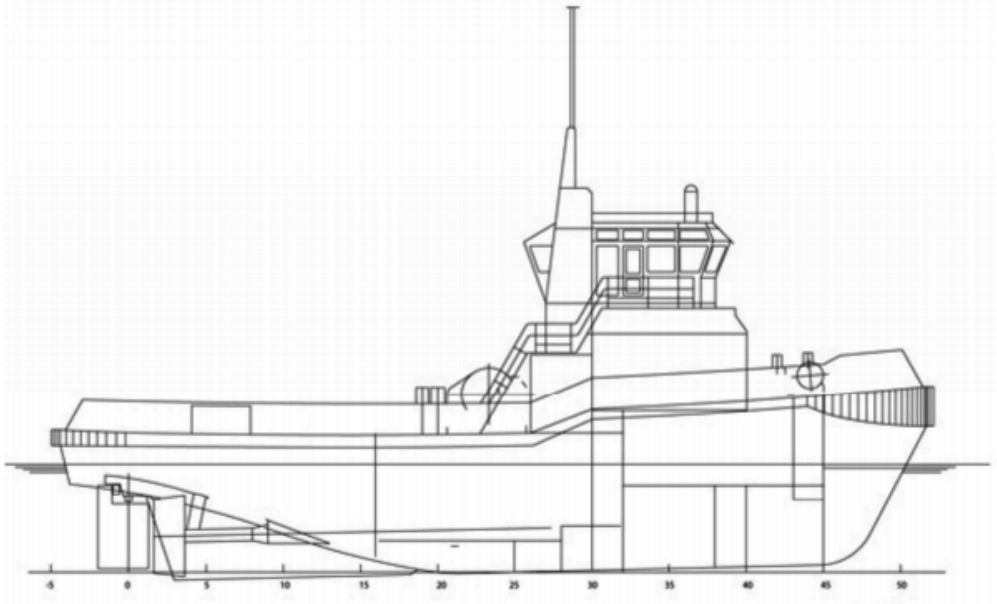
CAPACITIES

Fuel oil	127,5 m ³
Fresh water	22 m ³
Lubrication Oil	4,2 m ³
Hydraulic oil	1,4 m ³
Dirty oil	3,6 m ³
Ballast	16 m ³
Sewage	2,80 m ³
Foam	7 m ³

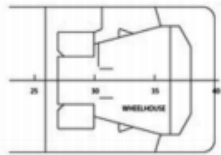
PERFORMANCE **ACCOMMODATION**

Speed	13 Knots	Accommodation	6 persons, consisting of four single crew cabins and one double crew cabin
Bollard Pull	30 Tbp		

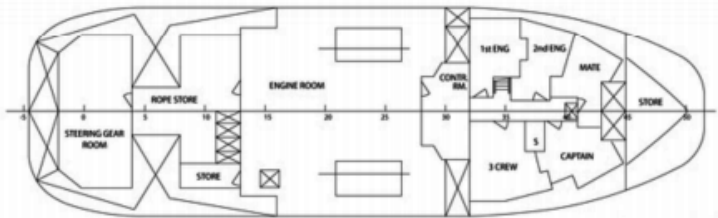
POLEN
General Arrangement



Main deck



Bridge deck



Below main deck